



# Introducing the INDEPTH Network

Prof. Osman Sankoh  
*Executive Director*

Tackling the Global Challenge of Antimicrobial Resistance  
A Global-NAMRIP network meeting

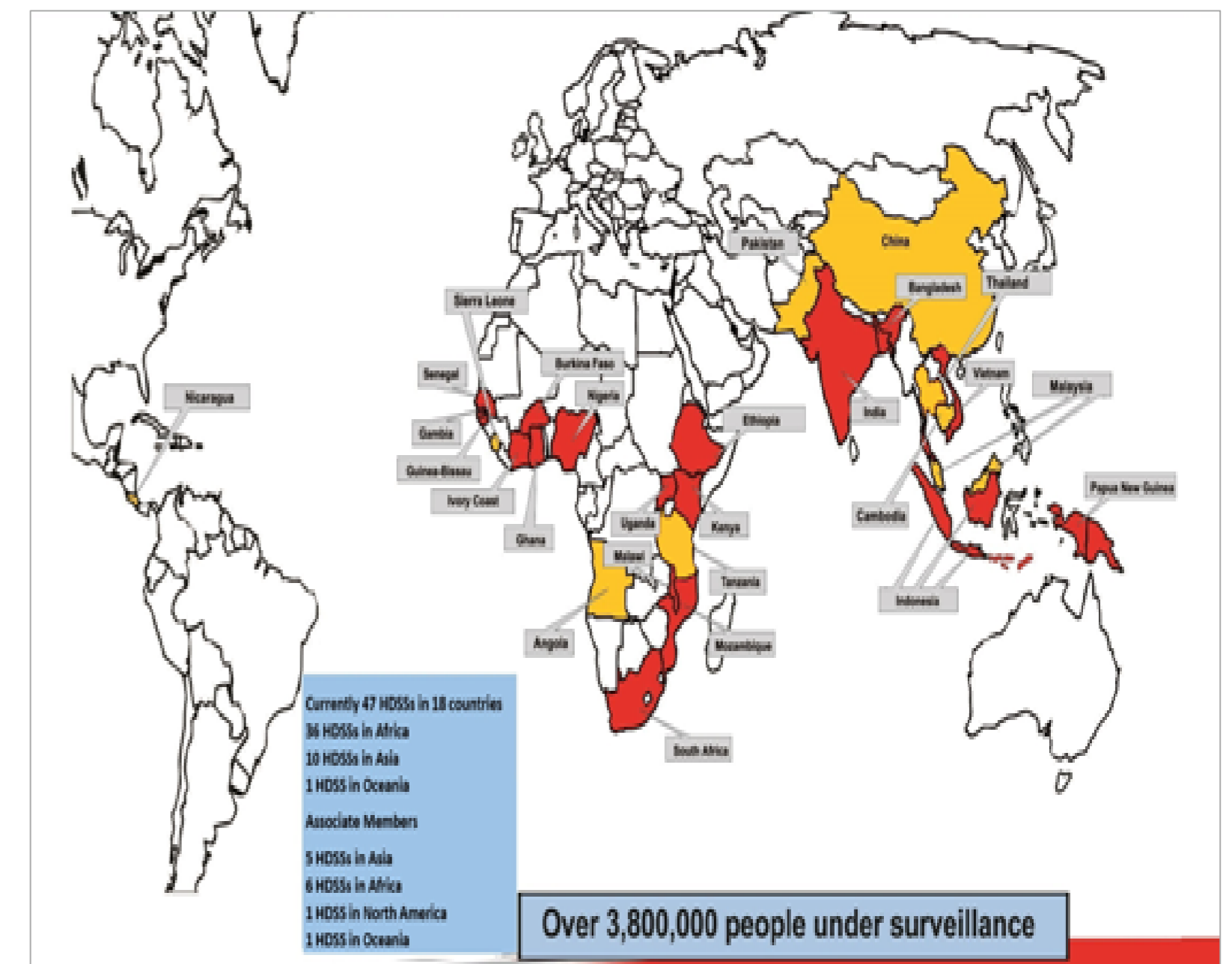
**Accra, Ghana**

**5-6 March 2018**

# What is the INDEPTH Network?

INDEPTH Network is a collection of currently 49 interconnected Health and Demographic Surveillance System (HDSS) sites that conduct longitudinal research on catchment populations across urban and rural areas in low- and middle-income countries

Sites are located across 19 countries in Africa, Asia, and Oceania and are involved in a wide variety of implementation research and policy development with over ~4M people regularly monitored



# What does INDEPTH do? Detailed view on INDEPTH Data

## CORE

- ✓ All cause mortality rates
- ✓ Cause-specific mortality proportions & rates
- ✓ Life table probabilities
- ✓ Fertility rates
- ✓ Migration rates

## ADDITIONAL

- ✓ population characteristics
- ✓ household characteristics, assets and wealth indexing
- ✓ health status / disease burdens
- ✓ access, use and impact of health services
- ✓ health seeking behaviours for severe and fatal conditions
- ✓ environmental contexts, risks, exposures
- ✓ household food security
- ✓ impact of poverty reduction strategies
- ✓ impact of health interventions

# What are INDEPTH's core activities?

A

Standardized collection of core demographic metrics across sites

Regular, uniform collection of core set of measurements across HDSS sites reported quarterly

This includes more than just health metrics:

- Pregnancies and their outcomes
- Cause of death
- Newborn births and deaths
- Maternal deaths
- Morbidity
- Socioeconomic characteristics
- Migration
- Fertility
- Older children, adolescents and adult health

B

Wide range of detailed research and implementation projects

More sophisticated research projects within particular focus area, including:

- Anti-Microbial Resistance
- Clinical trials
- Genetics
- Clinical interventions
- Equity and access
- HIV
- MNCH measurement
- Vaccination
- Environmental impact on health

Projects can be multi-site or take place within single site depending on desired scale and relevance

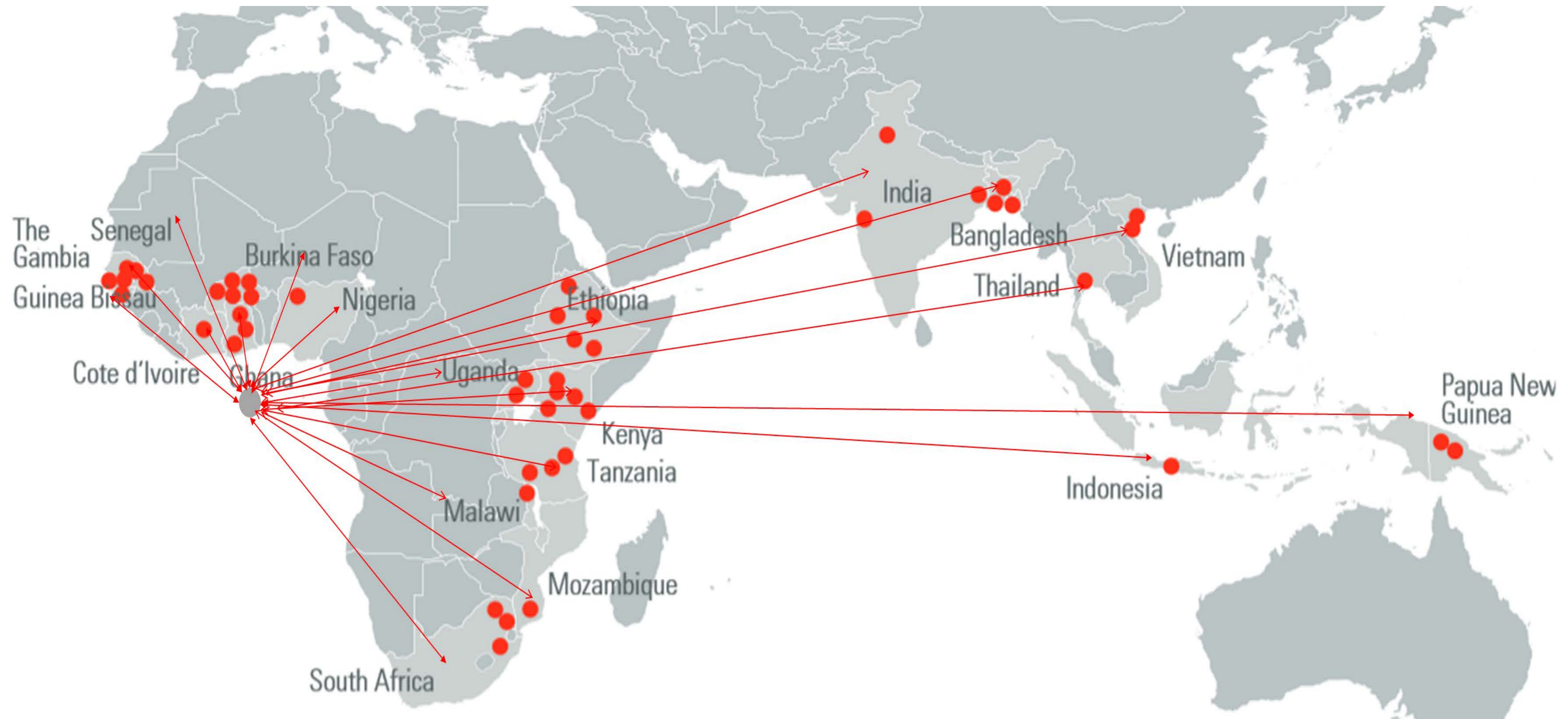
# What is the policy relevance and value of INDEPTH? 1/2

INDEPTH provides a platform for on-going longitudinal health and demographic tracking with a **global reach**, operating in different health systems and cultures with varied epidemiology that offers a unique medium for the **study of the impact of policy and practice**, the **testing of population-level indicators**, and the **development and validation of effective interventions for population-level impact**.

## **What is the policy relevance and value of INDEPTH? 2/2**

- **Opportunity to leverage the collective value of quantitative and qualitative data across HDSS sites and conduct multi-site research and surveillance through effective cross-site collaboration and timely data collection**
- **Ability to capitalize on established links between HDSS sites and health and other policymakers to magnify research findings and enable evidence-based decisions**
- **Engage community of scientists, technical experts to shape and execute research projects and policy engagements**
- **Use own researchers (MScs & PhDs) via training partnerships with universities**

# ***Infrastructure for doing it: The Resource & Training Centre currently located in Accra, Ghana***

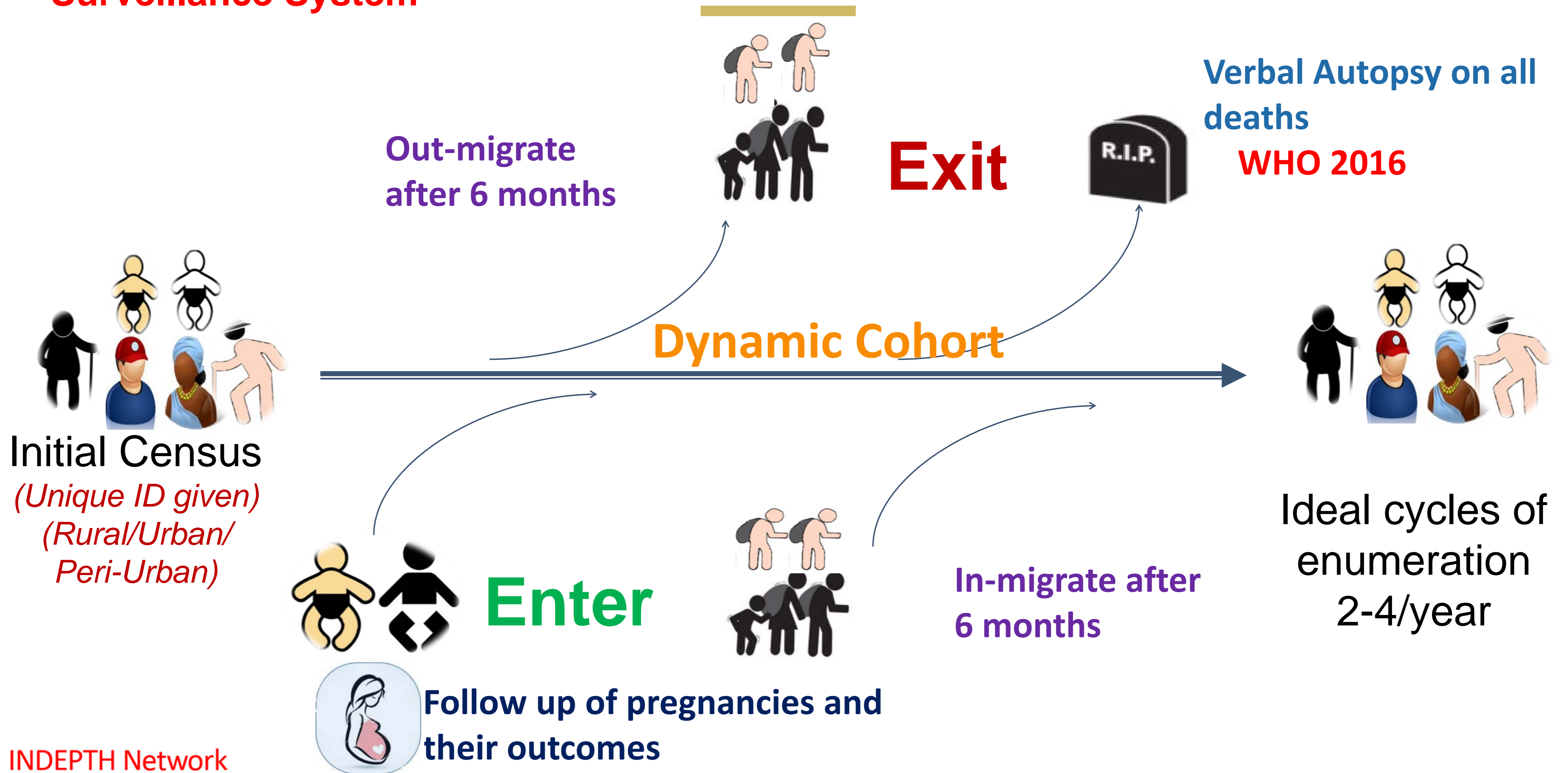


**New addition: Malaysia with SEACO HDSS**

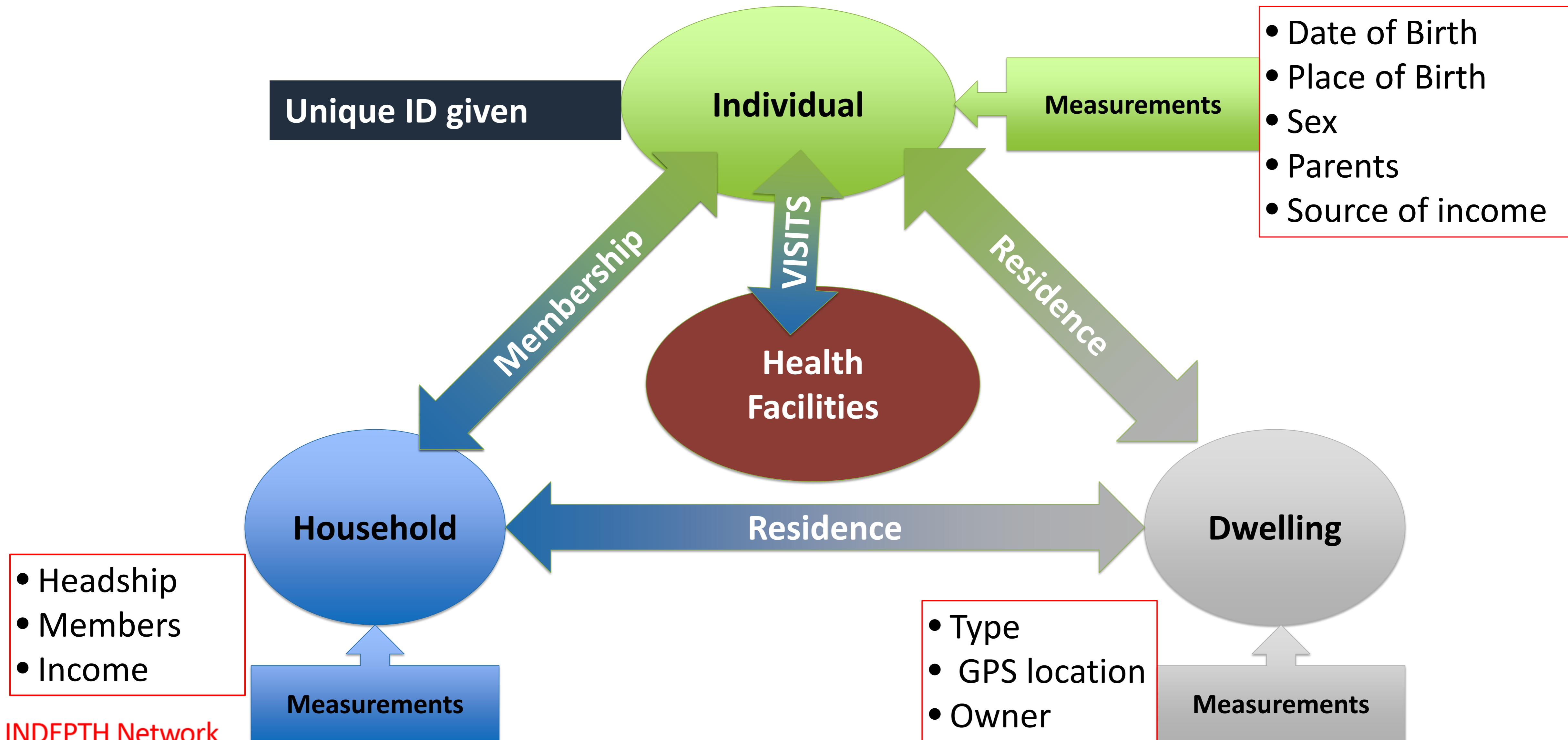
# Underlying Science System Infrastructure

## Health and Demographic Surveillance System

## HDSS equation for the denominator

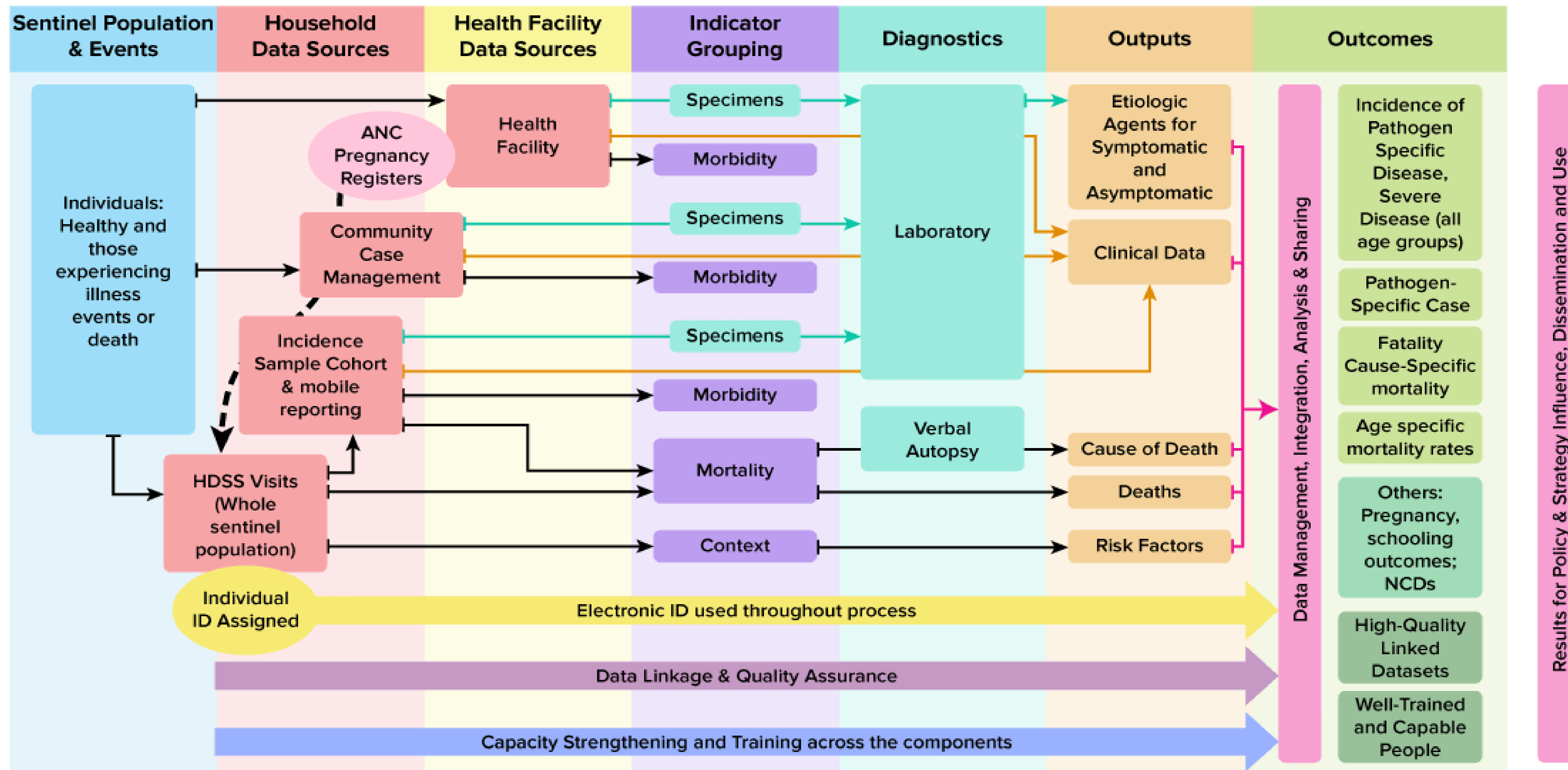


# Population Data Structure – HDSS Participants

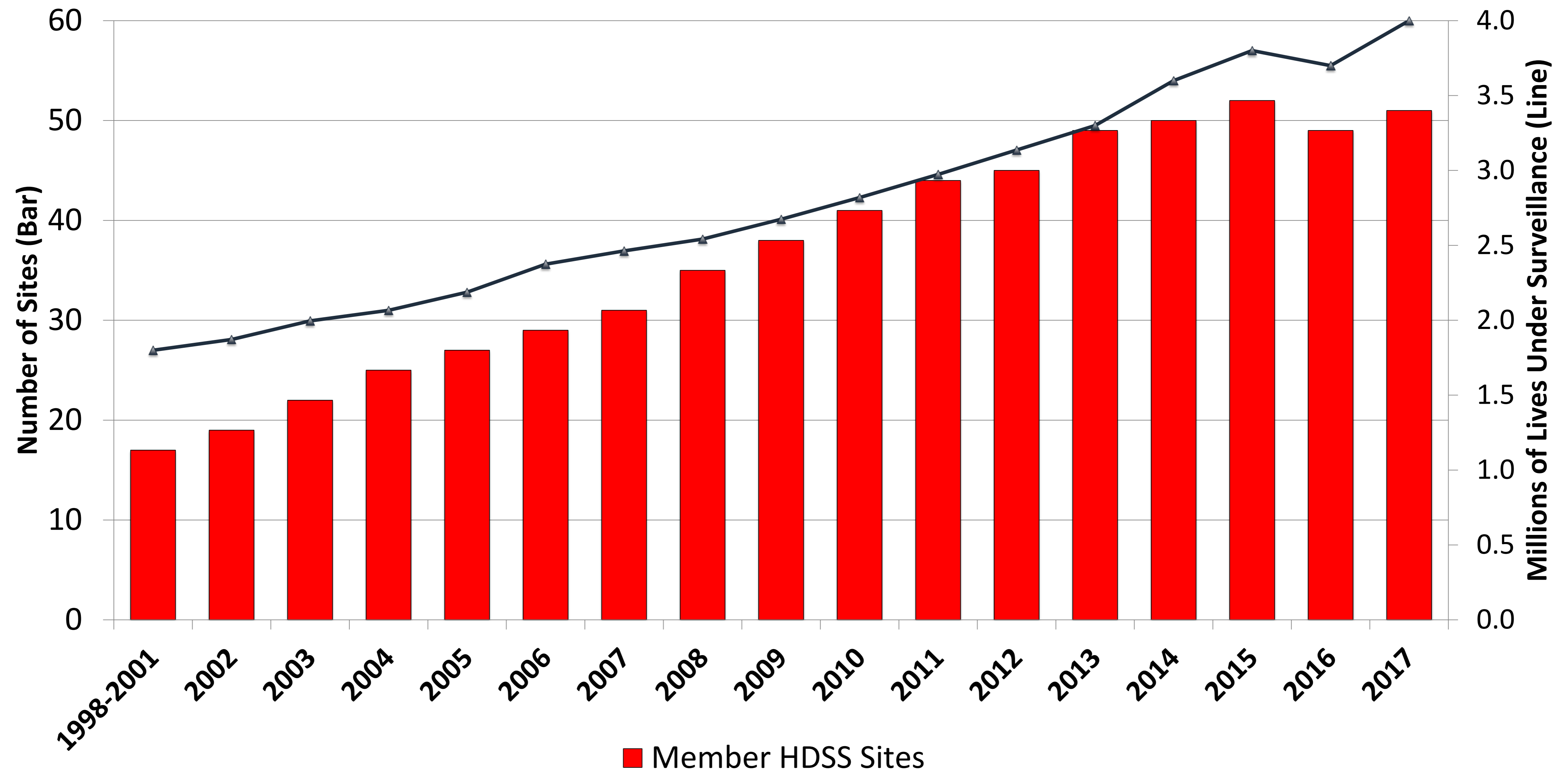


# How does INDEPTH do it?

## Comprehensive Health and Epidemiological Surveillance System (CHESS)



# Expanding Footprint of HDSS



# Strategic Plan 2017-2021

## **Broad Research / Activity Areas – Strategic Plan 2017-2021**

- 1. *Implement CHES at all sites to deepen the longitudinal platform to answer new scientific questions*** : make morbidity surveillance routine
- 2. *Provide timely metrics based on real data*** : make the best out of INDEPTHStats
- 3. *Conduct studies across the life-course***: from pregnancy to adult health and ageing; identify relevant practices and interventions
- 4. *Expand the utility of the platform to generate and analyse SDG indicator baseline & dynamics; conduct safety and effectiveness studies of drugs and vaccines***
- 5. *Assess scientific- and policy-relevant determinants & context of outcomes***: Nutrition, diet and food security; Environment, climate, indoor air pollution; Health equity, migration and poverty; Vaccines: safety, effectiveness and efficacy; Sex differentials/gender; Education-based analysis and interventions; Health system assessments

# From Strategic Plan 2017-2021

## Capacity Strengthening

1. Strengthen the capacities of people and institutions
2. Expand the INDEPTH Scientific Development and Leadership Programme including the MSc programmes

## Financial Sustainability

1. Continue to look for both core and project support from funding partners.
2. Strengthen the efforts at building an INDEPTH consultancy that leverages the skills and advantage of the Network.
3. Growing the INDEPTH Endowment Fund

## Policy Engagement

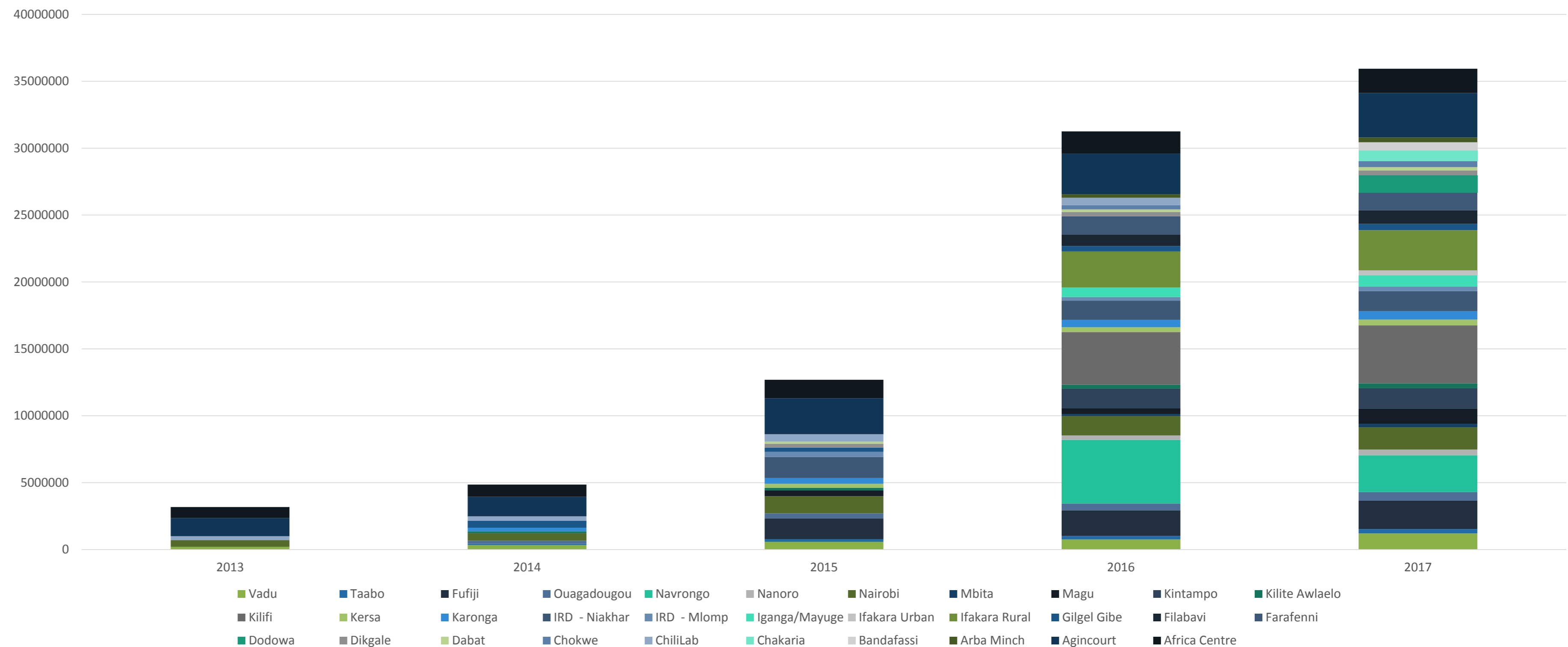
1. Tailor, package and direct research outputs for different stakeholders to stimulate public appreciation of findings
2. Leverage engagement with policy makers to attract more funding for research-into-practice activities

# AWorking Group – Antibiotics Resistance

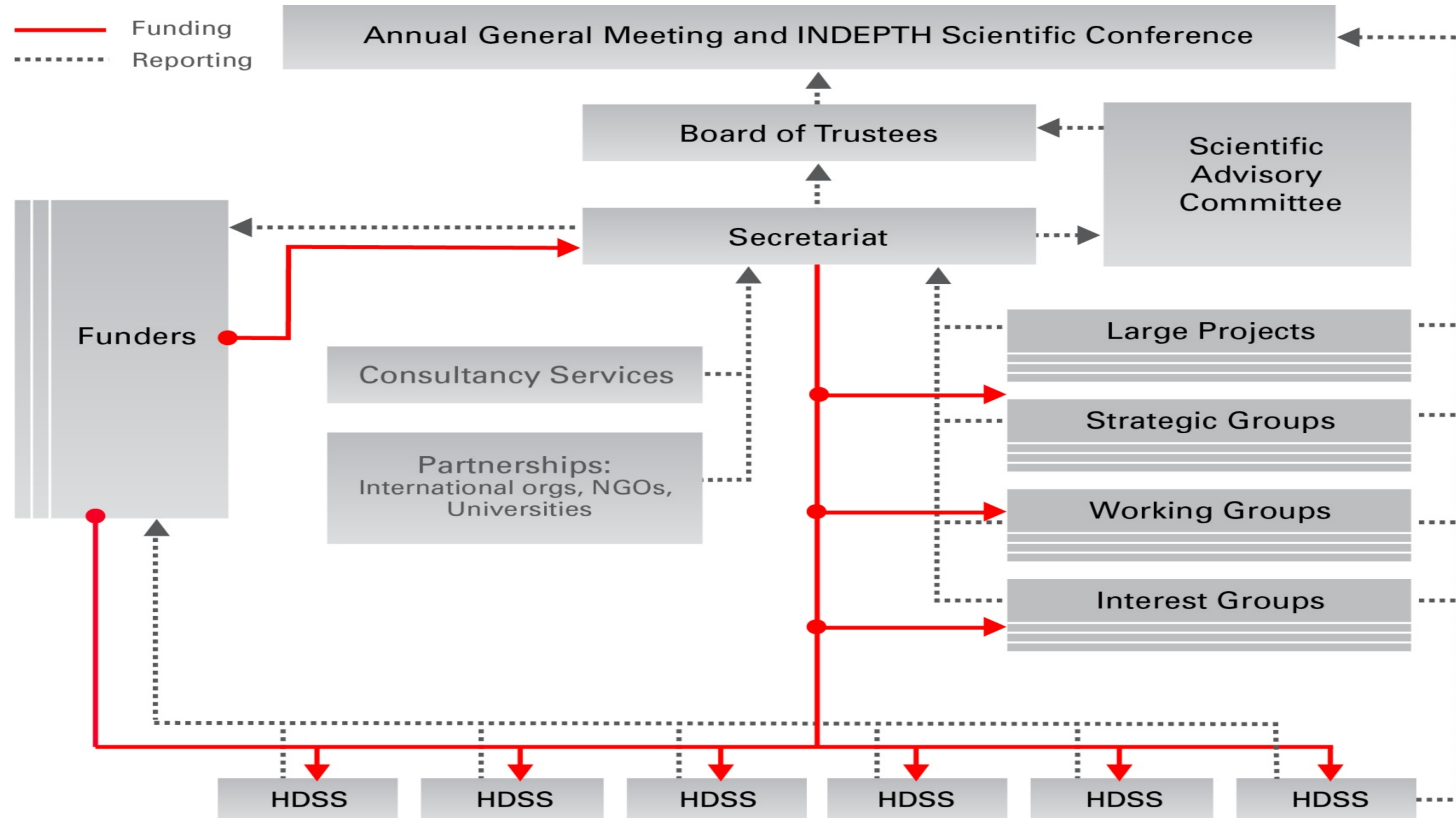
- Current project *Community level AntiBiotic ACcess and USe in low and middle countries (ABACUS)*.
- ABACUS is funded by the Wellcome Trust for €799,828 between 2016 and 2018 in partnership with the University of Oxford (UK) and University of Umea (Sweden).
- Seven INDEPTH Centres – Dodowa (Ghana), icddr,b (Bangladesh), Manhica (Mozambique), Hanoi Medical University (Vietnam), Kintampo (Ghana), Kanchanburi (Thailand), Agincourt (South Africa) – are implementing the project.
- The study aims to assess and compare community-based antibiotic access and consumption, and the factors that underpin them.
- The results of this study can inform the design of community-based interventions to promote rational antibiotic use in LMICs.

# 20 Years Today, we still have a vibrant, attractive Network

- Recognised since 2013 as a leader in sharing public health research data (INDEPTHStats, INDEPTH Data Repository)
  - ✓ 32 HDSSs on INDEPTHStats
  - ✓ 25 on the INDEPTH Data Repository



# INDEPTH Governance Structure



# Financial Performance – 2014-2016 (Income/Expenditure) - Audited

- Board review
- International audit
- Annual submission of financial statements to US IRS and Ghanaian authorities

A) Core Support	2016 US\$	2015 US\$	2014 US \$
	2,140,897	1,738,482	2,529,580
B) Projects	2016 US\$	2015 US\$	2014 US\$
	1,390,005	3,567,693	4,686,139
CORE AND PROJECTS	2016 US\$	2015 US\$	2014 US\$
TOTAL	3,549,537	5,306,175	7,215,719
Expenditure	2016 US\$		
TOTAL	3,520,433		

- Total funding raised last 10 years
  - ✓ *Over \$19,270,000 in core grants*
  - ✓ *Over \$14,400,000 in project grants*
  - \$33,670,000**
- Subgrants to member centres
  - ✓ *Over \$25,000,000 disbursed directly to centres*

# INDEPTH HDSS Sites & Leaders

<http://www.indepth-network.org/member-centres>

# INDEPTH Centres and Leaders 2018

<http://www.indepth-network.org/secretariat/governance/centre-leaders>

# INDEPTH Board, December 2017 –

[http://www.indepth-  
network.org/secretariat/governance/board-trustees](http://www.indepth-network.org/secretariat/governance/board-trustees)

# INDEPTH Scientific Advisory Committee 2018

[http://www.indepth-  
network.org/secretariat/governance/scientific-advisory-committee](http://www.indepth-network.org/secretariat/governance/scientific-advisory-committee)

# Current INDEPTH Funders

<http://www.indepth-network.org/about-us/funders>

# INDEPTH's Past, Present and Future

We have a flyer in English and French

<http://www.indepth-network.org/about-us/our-past-present-future>

For the future, we have a new Strategic Plan 2017-2021 available on the website

[http://www.indepth-network.org/documents/strategic\\_plans/indepth\\_strategic\\_plan\\_2017\\_2021.pdf](http://www.indepth-network.org/documents/strategic_plans/indepth_strategic_plan_2017_2021.pdf)

Summary in the next slides

**Thank You**